

## Introducing the Ruckus ZoneFlex System



As soon as you get your Ruckus Wireless network operating follow the instructions in the WebUI online help to update the firmware in each device—ZoneDirector and APs. This will ensure consistent operation.

### Customizing the Network with the WebUI

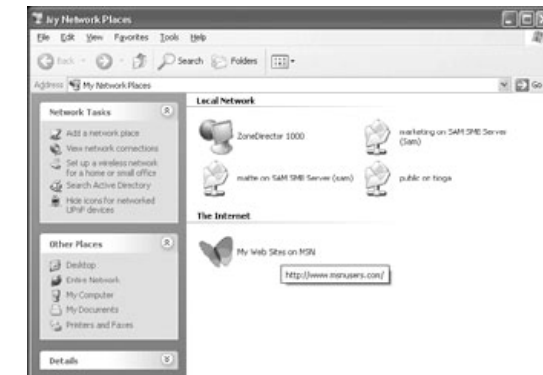
Use Ruckus Wireless WebUI to complete additional network configuration tasks, including the following:

- Review and change user roles, if needed
- Create additional controlled-use WLANs (for workgroup use)
- Use the Map View graphical “radio heat map” to evaluate the radio frequency coverage in your WLAN. This will help you optimize the placement of your APs
- Review and customize “guest pass” settings

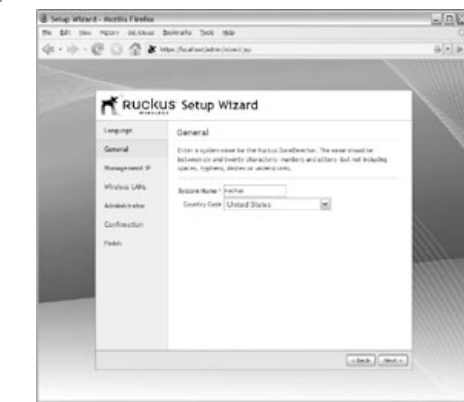
For more information on all the options, see the online help for the WebUI. For a jump start on what you can do, open the online help for “Top Ten Topics.”

## Setup Overview

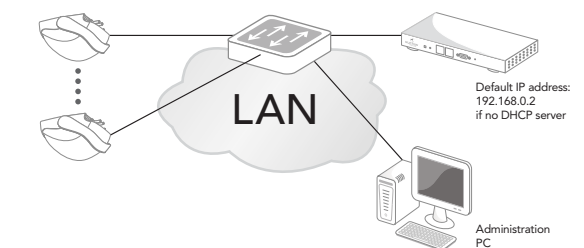
### 1 Connect and discover the ZoneDirector



### 2 Walk through the wizard



### 3 Connect the ZoneFlex APs to your local area Ethernet network



### 4 Use your ZoneFlex WLAN



**Ruckus Wireless, Inc.**  
880 West Maude Avenue, Ste. 101  
Sunnyvale, CA 94085

Web: [www.ruckuswireless.com](http://www.ruckuswireless.com)

Technical Support (Web):  
[support.ruckuswireless.com](http://support.ruckuswireless.com)

Technical Support (Email):  
[support@ruckuswireless.com](mailto:support@ruckuswireless.com)

Technical Support (Voice):  
(877) 438-9111 (fee-based)

p/n: d1-04202007-ABC

Copyright © 2007 Ruckus Wireless, Inc. All rights reserved. Ruckus, Ruckus Wireless are trademarks of Ruckus Wireless, Inc. All other company and product names mentioned in the documentation are held to be trademarked (and registered) by the primary holders.

## What You'll Need

- **A Windows XP/Service Pack 2-equipped PC** Sun Java Runtime Environment, v5 or later, installed on the administration PC
- **A Web browser**; either Internet Explorer (v6 or later) or Mozilla Firefox (v1.4 or later)
- **The IP address, netmask, gateway and DNS server addresses** assigned to the ZoneDirector—if it has a static network address

## 1 Connect and discover the ZoneDirector

1. Connect the ZoneDirector to a convenient power source and press the power button.
2. After the Power LED is lit, the Status LED is a blinking red light.
3. When the ZoneDirector is powered up, the Status LED is a blinking green light, indicating that the system is in "factory default" state. After you complete the Setup Wizard, the Status LED will be a steady green light.

Once ZoneDirector is on, and connected to your network, use your administration PC to "discover" it, verifying its connection. This automatically starts the Setup Wizard.

1. Open the My Network Places window.
2. Click the Show icons for networked UPnP devices link (in the "Network Tasks" pane).
3. If the Show UPnP Device Icons confirmation dialog box appears, click Yes to proceed. Windows sets up the feature, then activates it.
4. After Windows checks the network, a new "ZoneDirector" icon appears in the My Network Places window.
5. To proceed with setup, double-click that icon. The Ruckus ZoneDirector Wireless Setup wizard appears, ready for wireless network configuration.



**TIP:** If you prefer not to use UPnP, you can type in the ZoneDirector's IP address into a Web browser. In case there is no DHCP server on the LAN, the ZoneDirector's default IP address is "192.168.0.2" with a network mask of "255.255.255.0." Otherwise an IP address is assigned automatically.

## 2 Work through the wizard

1. When the Setup wizard appears, get started. **Obtain and enter the following information** to complete the Setup wizard:

**Language:** Pick the language you prefer to use in the WebUI application from the drop-down list. (This is separate from OS/System or browser language settings.)

**General:** Create a unique Name for the ZoneDirector. Use only letters and numbers for the name. Choose country code.

**Management IP:** If you select DHCP, you must connect your ZoneDirector to the local network via one of the Ethernet ports. The wizard will display the IP address it acquires from the local network. Write this down, as you will need it later.

If you selected Manual, then enter the required network settings in the (now) active text fields.

**Wireless LANs:** Enter the network name (ESSID). If you choose WPA-PSK for security, enter a secure Passphrase for your WLAN. (Make a note of the passphrase, as some users may need it when connecting their clients.)



Guest WLAN (optional): click the check box to create a Guest WLAN in addition to the corporate WLAN, then enter the name of the Guest WLAN.

**Administrator:** Set up both the "admin" account, and the first network user account (representing you as the administrator). (A copy of the first-time network connection instructions is included in the package for your use.)

**NOTE:** The user name and password can be any combination of letters and numbers, plus underscores or hyphens.

2. **Review the wizard Confirmation entries.** If you need to make a correction, click Back until the appropriate setup screen appears, then make the changes.
3. When the wizard Finish screen appears, **note the instructions**, including the IP address now assigned to the ZoneDirector. These will enable you to log into the newly-configured ZoneDirector.



**TIP:** Complete information on other configuration, management and trouble-shooting options is available through the online help for the Ruckus WebUI administration application.

## 3 Connect the ZoneFlex APs to your local area Ethernet network

1. **Distribute the APs** around your worksite, making sure they are 100 to 200 feet apart (to ensure the best coverage).
2. **Record each AP's Ethernet MAC address** (printed on the bottom of every AP), and note each device's exact worksite location.
3. **Connect the APs** to a local power source and to an Ethernet port



**TIP:** Some Ruckus APs are PoE-capable. If connected to a Power over Ethernet switch, the ZoneFlex APs can draw power through the Ethernet cables.

When the APs have powered up, they will automatically discover the ZoneDirector.

## 4 Use your ZoneFlex wireless LAN